

DEVELOPMENT BOARDS

RASPBERRY PI STYLE ENCLOSURES

Raspberry Pi Enclosures

No screws, no glue – just add your *Raspberry Pi* filling!

- Designed to house the *Raspberry Pi* via clip-in grooves - **NO SCREWS REQUIRED!**
- All cut-outs are pre-cut into the case - **NO MODS REQUIRED!**
- Supplied with rubber feet
- Supplied with LED light pipe (excluding clear)
- Gloss Finish
- L 94.9mm x W 60.4mm x H 30mm
- Pi Camera slot can be opened with a flat headed screwdriver
- **Mix and Match Colours - HAVE IT YOUR WAY!**

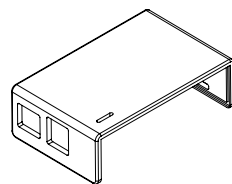
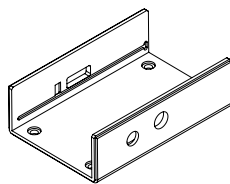
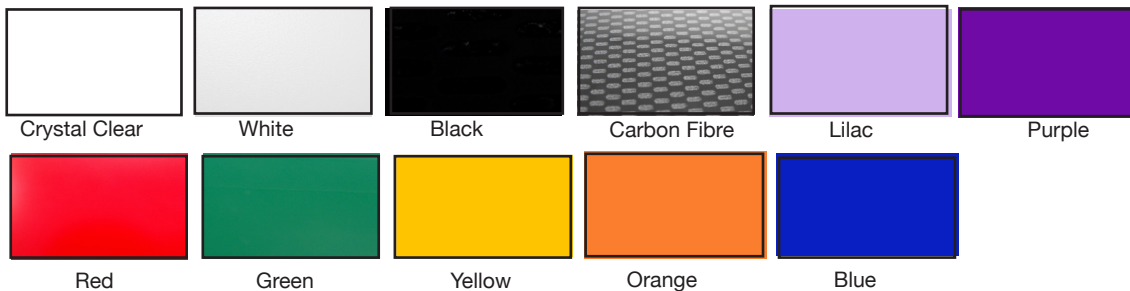


Raspberry Pi not included

Material:

- Thickness 3mm: HB Rated
- Coloured Materials: High Impact Polystyrene (HIPS)
- Carbon Fibre Finish: Acrylic Capped ABS
- Light Pipe: Transparent Acrylic

Available in a range of colours: Gloss Finish



CB PART NO.	COLOURS
CBRPI-BA-BLK	Black
CBRPI-BA-BLU	Blue
CBRPI-BA-GRN	Green
CBRPI-BA-LIL	Lilac
CBRPI-BA-ORG	Orange
CBRPI-BA-PUR	Purple
CBRPI-BA-RED	Red
CBRPI-BA-WHT	White
CBRPI-BA-YEL	Yellow
CBRPI-BA-CAR	Carbon Fibre
CBRPI-BA-CLR	Crystal Clear

CB PART NO.	COLOURS
CBRPI-AA-BLK	Black
CBRPI-AA-BLU	Blue
CBRPI-AA-GRN	Green
CBRPI-AA-LIL	Lilac
CBRPI-AA-ORG	Orange
CBRPI-AA-PUR	Purple
CBRPI-AA-RED	Red
CBRPI-AA-WHT	White
CBRPI-AA-YEL	Yellow
CBRPI-AA-CAR	Carbon Fibre
CBRPI-AA-CLR	Crystal Clear

LIGHT PIPE

