


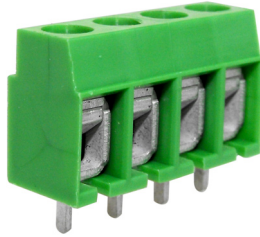


# PCB TERMINAL BLOCKS

## 5mm Pitch Commercial Low Profile Screw Terminal

- 2-12 pole solid block
- End stackable
- Moulded in green UL94-V0 flame retardent PA
- Wire protector terminals
- 0.5-4.0mm<sup>2</sup> (30-12AWG) solid cable
- 0.5-2.5mm<sup>2</sup> (30-12AWG) stranded cable
- Captive screws
- Anti solder wicking terminal
- Guided pin alignment
-    approved

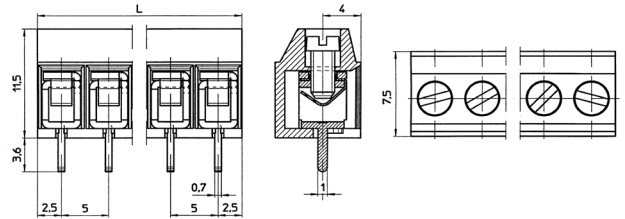
CTB55VG



TYPE NO.	POLES	LENGTH
CTB55VG/2	2	10mm
CTB55VG/3	3	15mm
CTB55VG/4	4	20mm
CTB55VG/5	5	25mm
CTB55VG/6	6	30mm
CTB55VG/7	7	35mm
CTB55VG/8	8	40mm
CTB55VG/9	9	45mm
CTB55VG/10	10	50mm
CTB55VG/11	11	55mm
CTB55VG/12	12	60mm

### SPECIFICATION

Rating	24A/250V UL=16A/300V, VDE&IMQ=24A/250V
Dielectric strength	≥2kV
Impulse withstand voltage	2kV
Working temperature	110°C
Moulding	UL94-V0 flame retardant PA
Pin/terminal	Tinned, nickel plated brass
Screw/torque	M2.5 steel zinc plated, 0.4Nm
Recommended PCB hole size	ø1.3mm



PCB  
TERMINAL  
BLOCKS

INTER-  
CONNECTION

FUSES &  
FUSE-  
HOLDERS

LEDs &  
INDICATORS

MINIATURE  
SWITCHES

LIMIT &  
SAFETY  
SWITCHES

CONTROL  
PRODUCTS

INTERFACE  
MODULES &  
SUPPORTS

RELAY  
BASES

ENCLOSURES

BATTERIES

TRANS-  
FORMERS